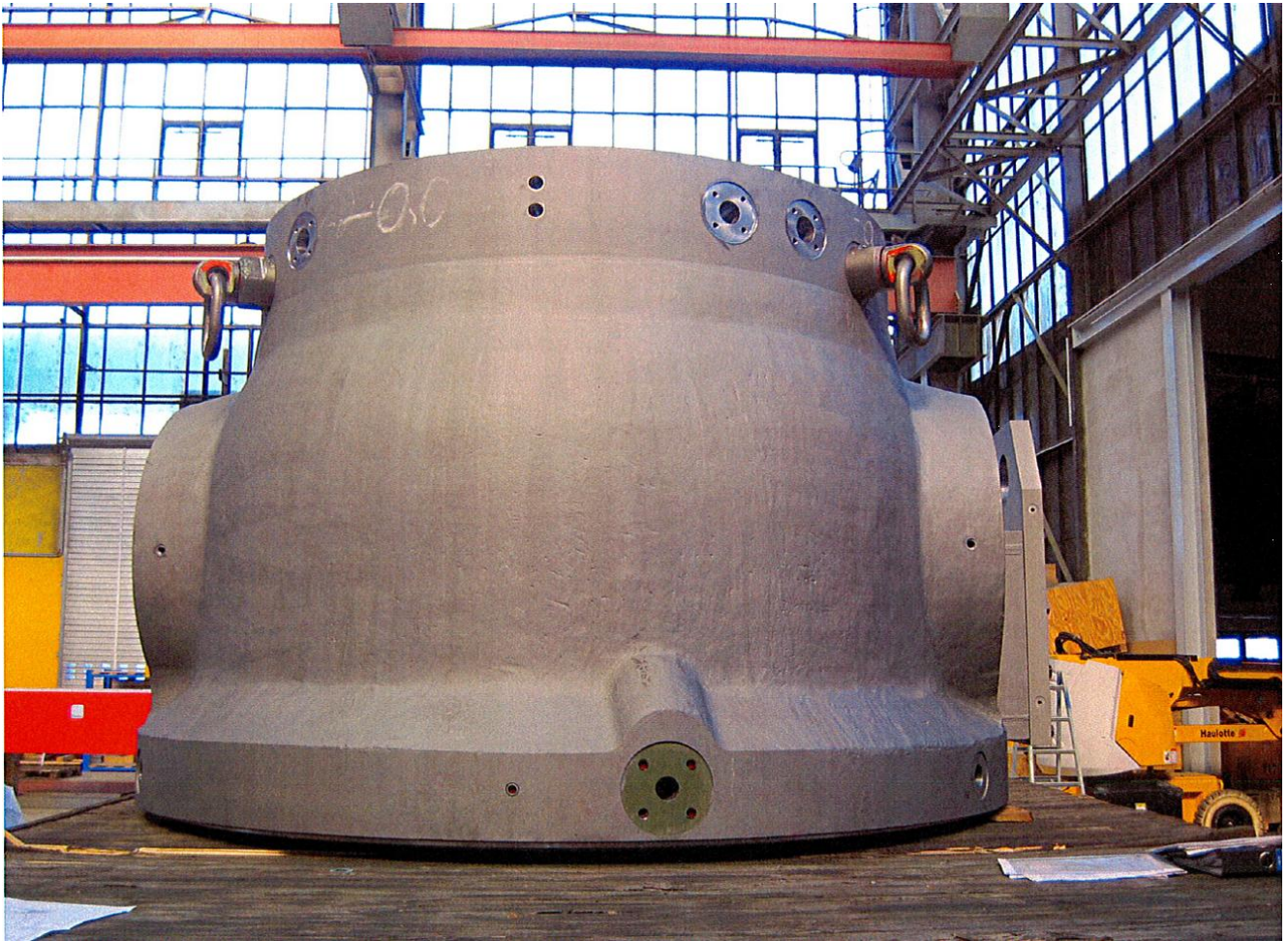
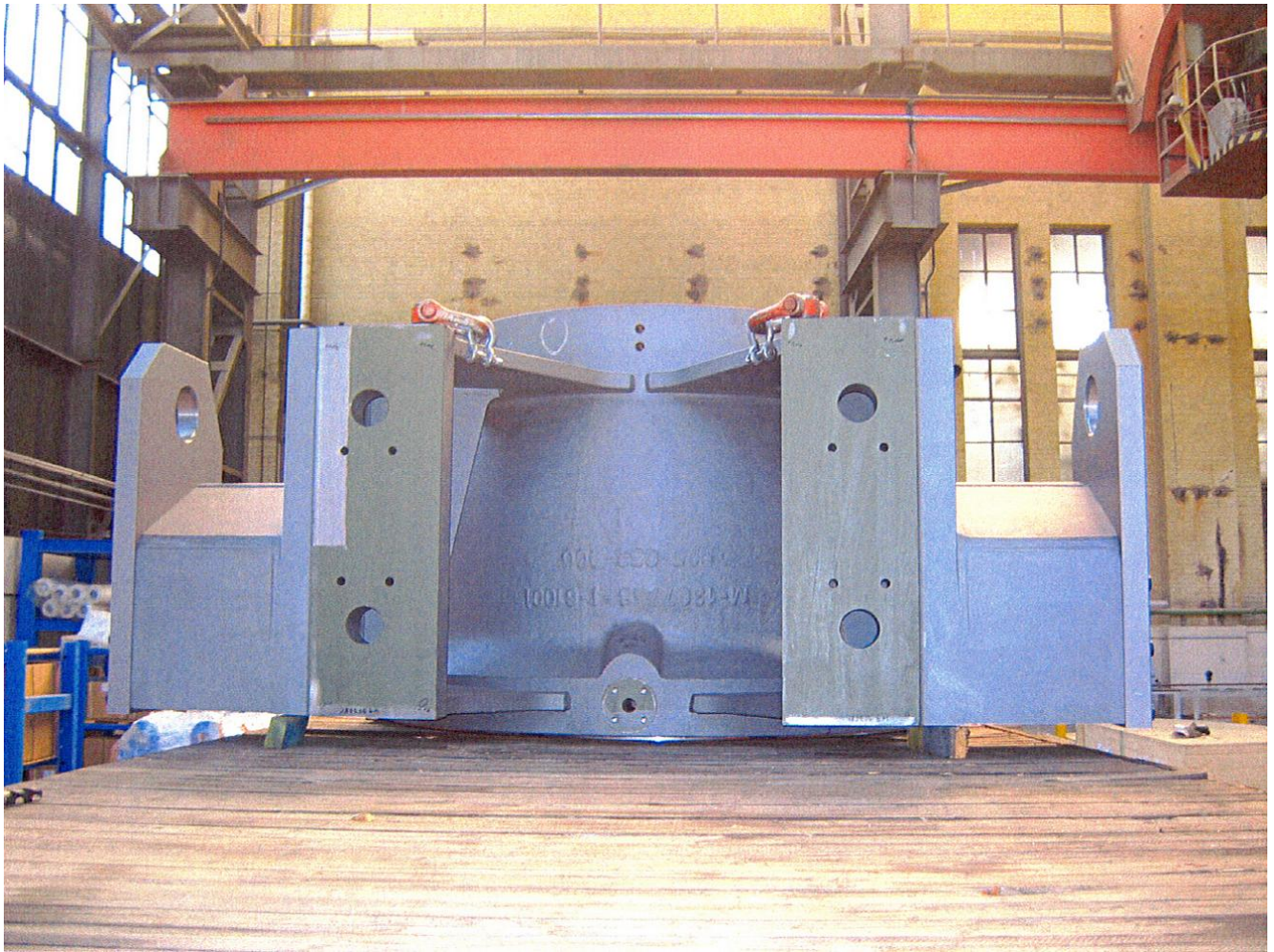
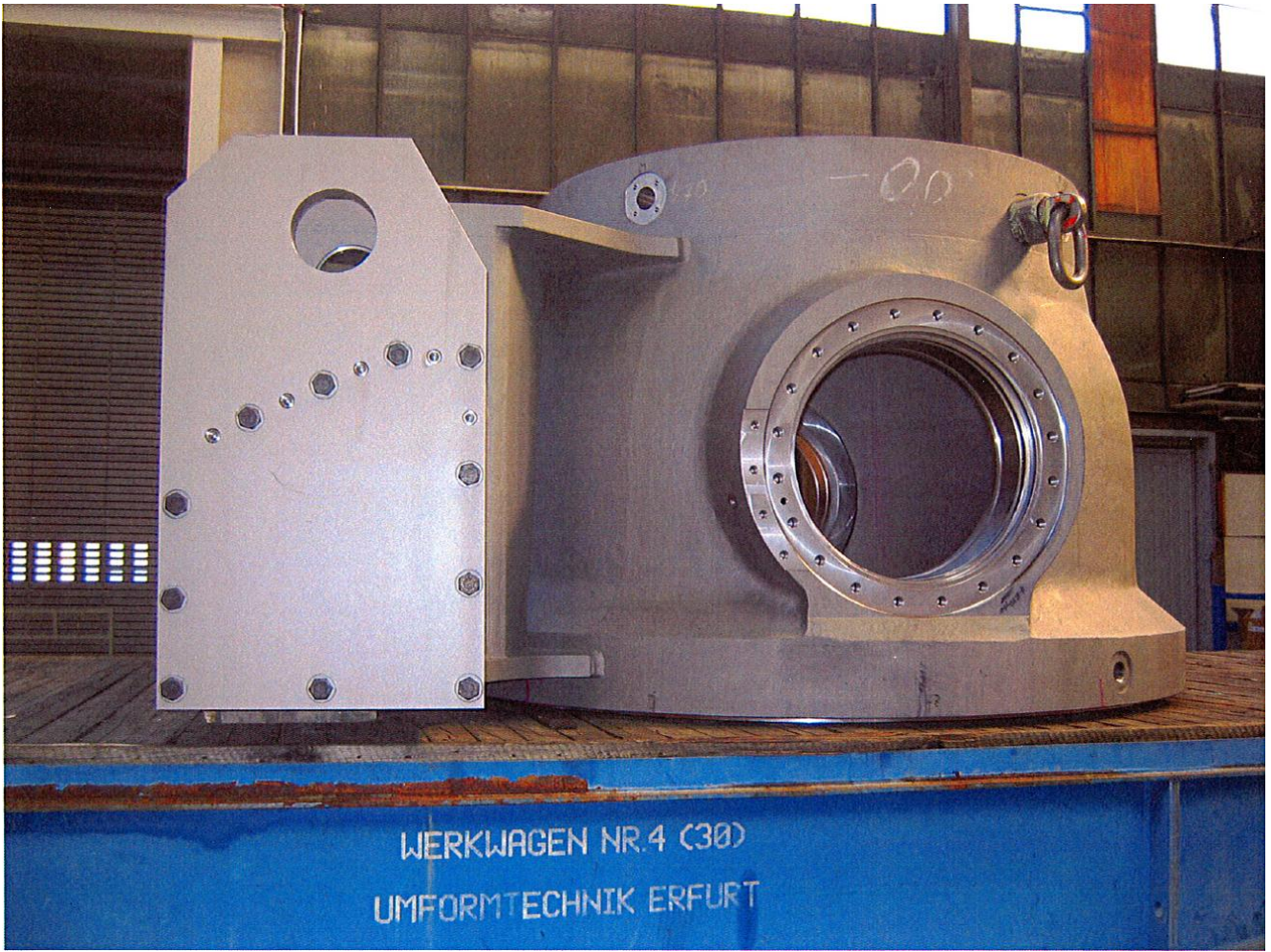


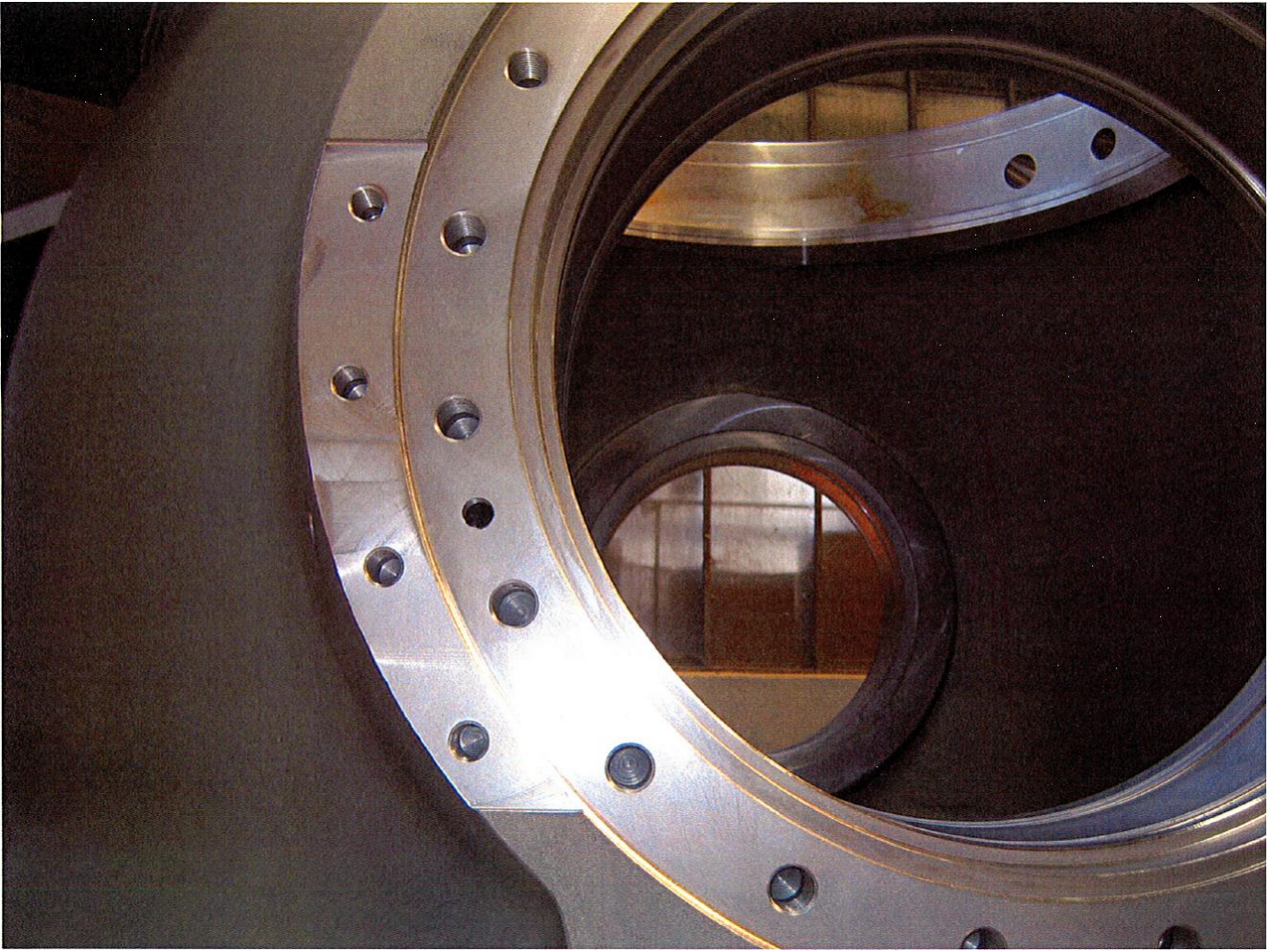
Hydroelectric Power Station







WERKWAGEN NR. 4 (30)
UMFORMTECHNIK ERFURT



Hydroelectric Power Station - Valve Body

Material: G20Mn5

Application: Hydroelectric Power Station

Weight: 18.000 kg

Ask info

<< [BACK TO PRODUCTS LIST](#)